

VENOUS ACCESS PORTS  
DIGNITY® MINI



**Kit Contains**

- (1) CT Implantable Port
- (1) Catheter
- (2) Catheter Locks
- (1) Scalpel
- (1) 18ga Introducer Needle
- (1) Vein Pick
- (1) .038" x 70cm "J" Marked Guidewire with Advancer
- (1) Tearaway Introducer
- (1) 10cc Syringe
- (1) Tunneler
- (2) 22ga Huber Needle (1-Straight, 1-Right Angle)
- (1) Blunt Tip Needle
- (1) Port IFU
- (1) Patient Chart Sticker

**Micro-Stick®**

- (1) 5F Coaxial Micro-Stick®
- (1) Guidewire with Radiopaque Tip
- (1) 21ga Introducer Needle with Echogenic Tip

BIG in performance  
and comfort

**DIGNITY® MINI CT**

| Dignity® Mini CT Port | 8F ChronoFlex* Catheter | 6.6F ChronoFlex* Catheter | 5F ChronoFlex* Catheter |
|-----------------------|-------------------------|---------------------------|-------------------------|
| Attachable Catheter   | MRCTI80041M             | MRCTI66041M               | MRCTI50041M             |
| Pre-Attached Catheter | MRCTI80841M             | MRCTI66841M               | MRCTI50841M             |

**DIGNITY® MINI CT WITH SILICONE FILLED SUTURE HOLES**

| Dignity® Mini CT Port | 8F ChronoFlex* Catheter | 6.6F ChronoFlex* Catheter | 5F ChronoFlex* Catheter |
|-----------------------|-------------------------|---------------------------|-------------------------|
| Attachable Catheter   | MRCTI8004SM             | MRCTI6604SM               | MRCTI5004SM             |
| Pre-Attached Catheter | MRCTI8084SM             | MRCTI6684SM               | MRCTI5084SM             |

**DIGNITY® MINI CT WITH MICRO-STICK® KIT**

| Dignity® Mini CT Port | 8F ChronoFlex* Catheter | 6.6F ChronoFlex* Catheter | 5F ChronoFlex* Catheter |
|-----------------------|-------------------------|---------------------------|-------------------------|
| Attachable Catheter   | MICTI80041M             | MICTI66041M               | MICTI50041M             |
| Pre-Attached Catheter | MICTI80841M             | MICTI66841M               | MICTI50841M             |

**DIGNITY® MINI CT WITH SILICONE FILLED SUTURE HOLES AND MICRO-STICK® KIT**

| Dignity® Mini CT Port | 8F ChronoFlex* Catheter | 6.6F ChronoFlex* Catheter | 5F ChronoFlex* Catheter |
|-----------------------|-------------------------|---------------------------|-------------------------|
| Attachable Catheter   | MICTI8004SM             | MICTI6604SM               | MICTI5004SM             |
| Pre-Attached Catheter | MICTI8084SM             | MICTI6684SM               | MICTI5084SM             |

\* CHRONOFLEX® AL85AB20 (20% Barium) – main ingredient in the catheter lumen.  
CHRONOFLEX® is a registered trademark of AdvanSource Biomaterials, Inc.

CE2797



MPS Medical Product Service GmbH  
Borngasse 20  
35619 Braunfels  
Germany

ISO13485  
Certified Quality System

**Medical Components, Inc.**  
1499 Delp Drive, Harleysville, PA 19438, U.S.A.  
P: 215.256.4201 F: 215.256.1787  
[www.medcompnet.com](http://www.medcompnet.com)

PN2590 Rev. B 9/20

[medcompnet.com/mini](http://medcompnet.com/mini)

VENOUS ACCESS PORTS  
DIGNITY® MINI 



*Dignity*  
mini  
POWER INJECTABLE PORT

**As part of our complete line of Dignity® ports, we now have a power injectable port size for any patient.**

The Dignity® Mini is reliable to use and barely noticeable to the patient. Its low profile improves patient comfort and aesthetics without sacrificing clinical performance. The ergonomic design makes it easier to implant and access. It's versatile enough to be implanted in either the chest or the arm, and it's easily identifiable under x-ray. That's a lot of performance packed into such a small device. And we think that's pretty big news.

**Hard to see**

Patients don't want to look like they have an implanted port. Dignity® Mini's low profile makes it nearly undetectable for your patients.

**Easy to find**

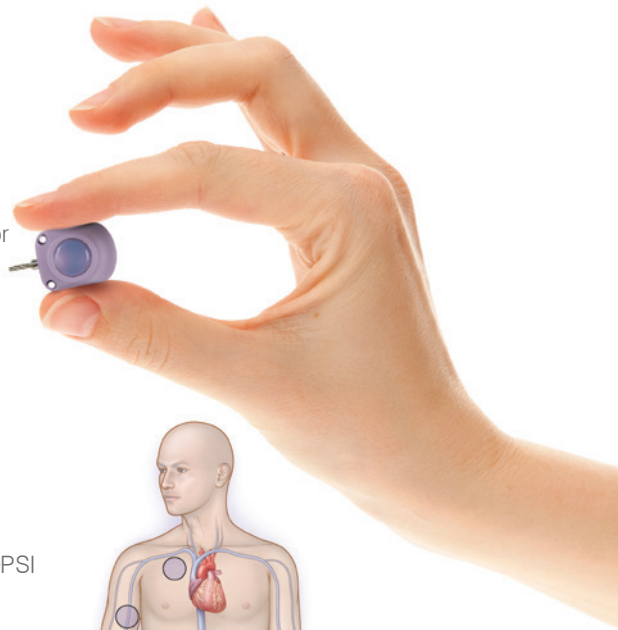
You need easy access to administer treatment. The ergonomic design makes this port easier to implant & access.

**Reliable as ever**

Patients and clinicians alike get exactly what they need in this versatile port. The performance you need. The comfort patients deserve.

**Comfort**

- Smallest PI port for minimal port pocket
- Tapered shape for gradual external appearance
- Lightweight, smooth contour for maximum comfort

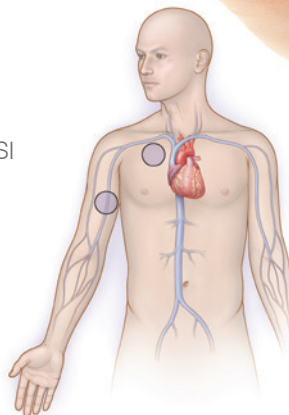


**360° target**

Palpation rim with 360° target.

**Power injection**

Power injection of contrast media up to 5 CC/Sec @ 300PSI



**Chest or arm placement**

Alternative options for patients

Small in size



**Reduced width**

Minimizes incision length during implantation and increases the port septum-to-body ratio to promote ease of access



**Smaller profile**

Excellent port septum-to-body ratio while offering a high level of performance



**Concave sides**

Allow for controlled, accurate port assembly and placement



**Raised rim**

Provides a clear tactile response during palpation, assisting in septum location



**Radiopaque ink**

"CT" printing can be visualized under x-ray to provide confirmation of power injectability



**Locking Mechanism**

Universal form allows securement from either end.